

## FEATURES:

- ✓ Hardened and ground steel plunger and rest plate.
- ✓ Masters on any flat surface, no special master required.
- ✓ The angle of the gage must be larger than the angle of the part to be inspected.
- ✓ Measures the top diameter directly on the dial indicator or digital indicator.
- ✓ 3 Blade contact ensures accurate, repeatable readings.
- ✓ .001"/0.02mm dial indicator, standard.
- ✓ Inch or metric dial or digital indicators available.
- ✓ Optional ring gage setting masters are available.



I.D. - COUNTERSINK MODEL 0-90°				
RANGE	INCH PART#	RANGE	METRIC PART#	DIGITAL PART#
0-3/8"	DC-90-375	0-9.5MM	DC-90-375M	DC-90-375-D
0-1/2"	DC-90-500	0-12.7MM	DC-90-500M	DC-90-500-D
0-1"	DC-90-1000	0-25MM	DC-90-1000M	DC-90-1000-D
1-2"	DC-90-2000	25-50MM	DC-90-2000M	DC-90-2000-D
2-3"	DC-90-3000	50-75MM	DC-90-3000M	DC-90-3000-D
3-4"	DC-90-4000	75-100MM	DC-90-4000M	DC-90-4000-D
I.D. - COUNTERSINK MODEL 90-127°				
RANGE	INCH PART#	RANGE	METRIC PART#	DIGITAL PART#
0-3/8"	DC-127-375	0-9.5MM	DC-127-375M	DC-127-375-D
0-1/2"	DC-127-500	0-12.7MM	DC-127-500M	DC-127-500-D
0-1"	DC-127-1000	0-25MM	DC-127-1000M	DC-127-1000-D
1-2"	DC-127-2000	25-50MM	DC-127-2000M	DC-127-2000-D
2-3"	DC-127-3000	50-75MM	DC-127-3000M	DC-127-3000-D
3-4"	DC-127-4000	75-100MM	DC-127-4000M	DC-127-4000-D

O.D. - CHAMFER MODEL 0-90°				
RANGE	INCH PART#	RANGE	METRIC PART#	DIGITAL PART#
1/8-1/2"	DO-90-500	3.2-12.7MM	DO-90-500M	DO-90-500-D
3/16-1"	DO-90-1000	4.7-25MM	DO-90-1000M	DO-90-1000-D
1-2"	DO-90-2000	25-50MM	DO-90-2000M	DO-90-2000-D
2-3" *	DO-90-3000	50-75MM	DO-90-3000M	DO-90-3000-D
3-4" *	DO-90-4000	75-100MM	DO-90-4000M	DO-90-4000-D
O.D.-CHAMFER MODEL 90-127°				
RANGE	INCH PART#	RANGE	METRIC PART#	DIGITAL PART#
1/8-1/2"	DO-127-500	3.2-12.7MM	DO-127-500M	DO-127-500-D
3/16-1"	DO-127-1000	4.7-25MM	DO-127-1000M	DO-127-1000-D
1-2"	DO-127-2000	25-50MM	DO-127-2000M	DO-127-2000-D
2-3" *	DO-127-3000	50-75MM	DO-127-3000M	DO-127-3000-D
3-4" *	DO-127-4000	75-100MM	DO-127-4000M	DO-127-4000-D

\* Special Order

I.D. - Countersink Dial Indicator Models

AX321-ID for DC-90- ID models ordering # B10910-D

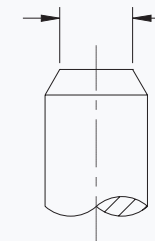
AX341-ID for DC-127- ID models ordering # B10915-D

O.D. - Chamfer Dial Indicator Models

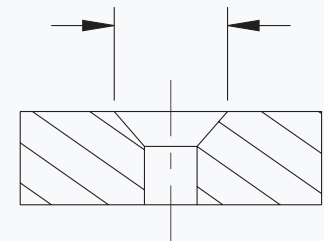
AX321-OD for DO-90- OD models ordering # B10710-D

AX341-OD for DO-127- OD models ordering # B10715-D

O.D. gage measures this diameter



I.D. gage measures this diameter



Digital Models Countersink & Chamfer Models  
Programmable model inch / metric, 2:1 and 4:1 digital indicator  
ordering # MT543

2:1 Ratio Digital Indicator with .0005" / 0.01mm graduation for  
DC-90- ID and DO-90- OD ordering # PG4600-3-45001

4:1 Ratio Digital Indicator with .0005" / 0.01mm graduation for  
DC-127- ID and DO-127- OD ordering # PG4600-3-45002

4:1 Ratio Digital Indicator with .001" / 0.02mm graduation for DC-  
127- ID and DO-127- OD ordering # PG1600-3-45001